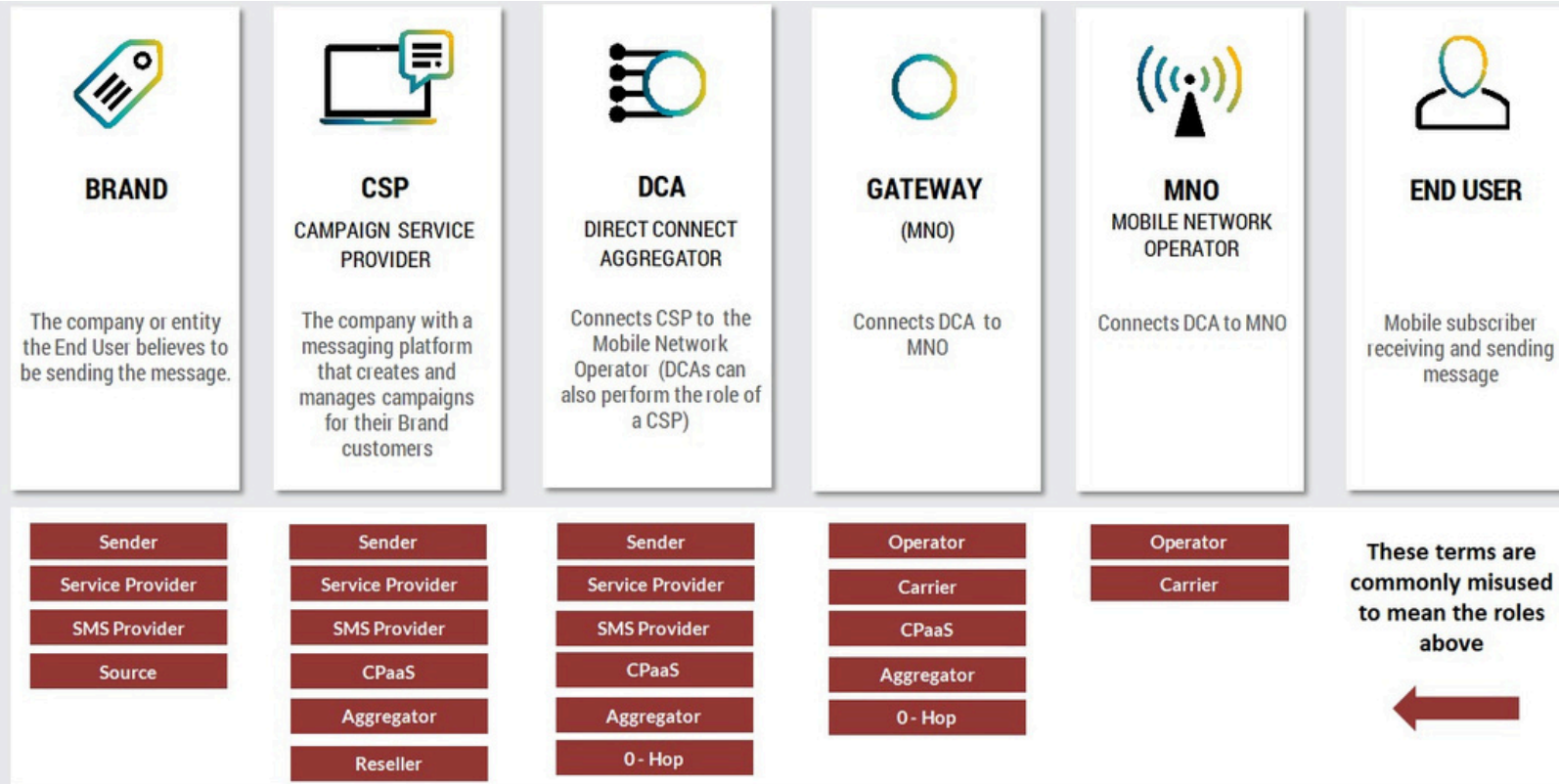


A woman with dark hair and glasses is looking at a smartphone. The background is a blurred cityscape at night with colorful lights. Overlaid on the image is a white network diagram consisting of several glowing nodes connected by curved lines, representing a communication network.

Quick Reference Guide for CSPs

Terminology in the 10DLC Ecosystem



Who is TXTPass intended for?

The Service is available to CSPs, DCAs and MNOs, each with a dedicated portal and set of APIs

Identification, Vetting, and Verification of Brands

Brand Identity check (Verified/Unverified)

This check is carried out for each Brand by TXTPass after its registration. We locate and confirm the existence of the Company you submitted by checking against several databases and utilizing best practice third party verification vendors. The Brand Identity Status is based on the accuracy* of the submitted information. The following information must be verified for the brand to obtain a "Verified" status:

- EIN / Tax ID
- Legal Company Name
- Legal Company Address

This check also returns the following:

- Whether the Brands is a Tax-exempt organization if the "non-profit" entity type is selected.
- Whether a Brand is part of the Russell 3000 list.

*Typos and outdated information can significantly affect this outcome

Vetting - Score (0/100)

ON DEMAND

The Vetting Score, which can be obtained through TXTPass or imported, refers to a deeper series of checks which include the "Reputation" in the messaging ecosystem of the Brand you submitted. Its result can determine whether a Brand is able to obtain better MNO terms. Vetting might be required to gain access to Special Use cases, as requested by MNOs. Carrier approved vetting partners:

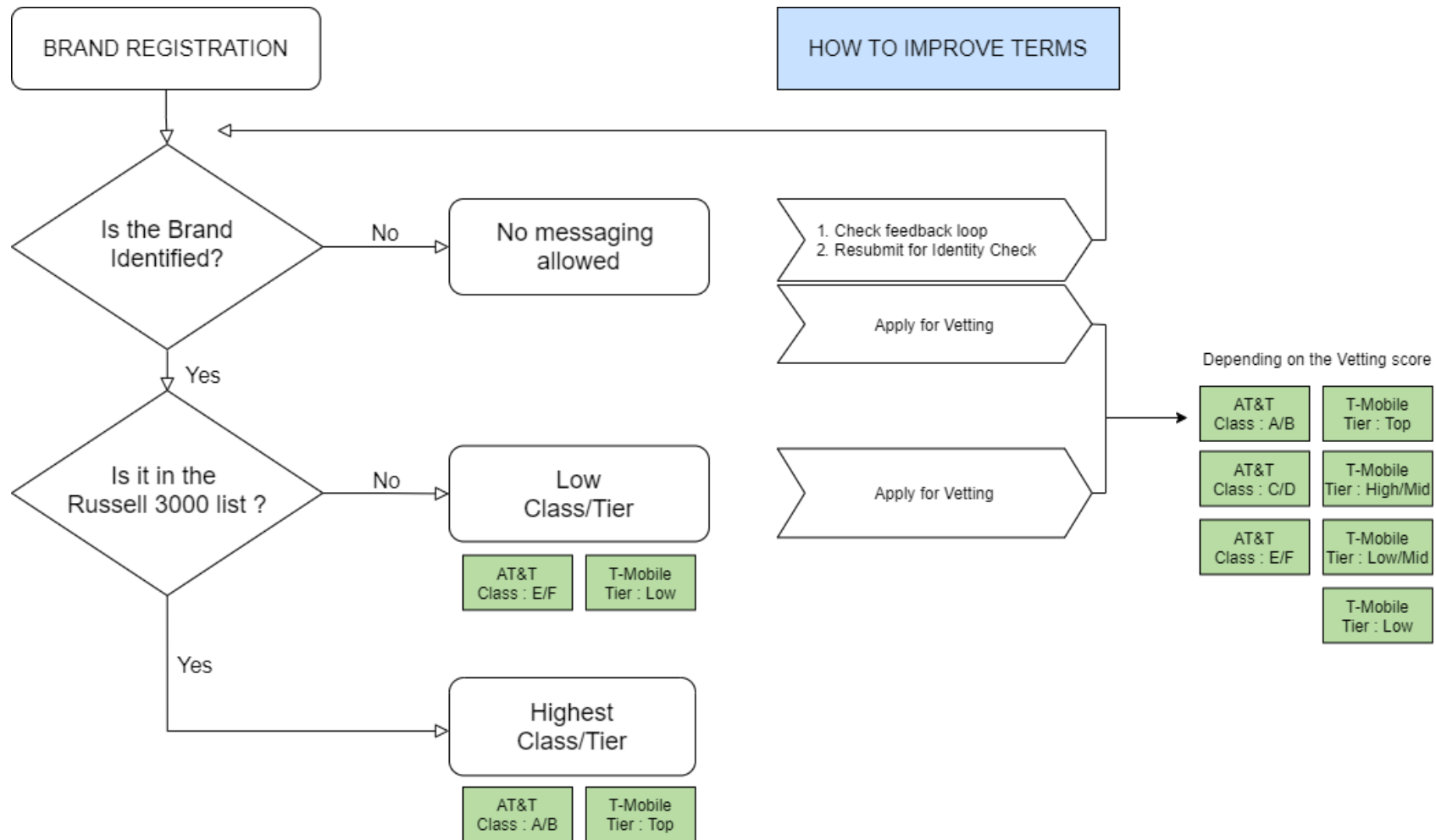
- Aegis Mobile
- WMC Global

Vetting - Verification (Yes/No)

Verification is a binary check (yes/no) and does not score political campaigns. Its purpose is to validate that the sender is verified to be an actual politician or registered political candidate. Carrier approved verification partner:

- Campaign Verify (Currently for FEC Political only but may expand based on further discussions with Carriers and ecosystem participants)

MNO Class/Tier assignment flow



Improving terms for your Brand

UNVERIFIED BRANDS

Unverified Brands may gain access to messaging on 10DLC by the following (after having updated incorrect data) :

RESUBMISSION: The CSP can use our feedback loop to identify possible data inaccuracies and resubmit the Brand for Basic Verification. Resubmitted Brands, when positively Verified, can have access to all standard Use Cases with the following classes: E F (AT&T) and LOW (T-Mobile) or, for Russell 3000 Brands A B (AT&T) and TOP (T-Mobile).

Resubmission fee: \$4.00

VETTING: The CSP can have the Brand Vetted through one of our external Vetting Partners. Vetted Brands can have access to all standard Use Cases and potentially achieve any of the available classes.

VERIFIED BRANDS

Verified Brands can improve their terms by one of the following actions:

VETTING: The CSP can have the Brand Vetted through one of our external Vetting Partners. Vetted Brands can have access to all standard Use Cases and potentially achieve any of the available classes.

Vetting

Vetting through our external partners represents a more detailed review of the brand with a focus on its reputation in the messaging space. The result is 0-100 score that will place the Brand in one of available Carrier Tiers.



Unscored

The record is referred for manual investigation because the vet could not be completed by automated services. These are addressed in the order they are received.

Vetting Score

The Brand has been successfully vetted and has received a score (0-100).

Appeals

Vetting scores can be appealed to the corresponding external partner via email:

appeals@aegismobile.com

Standard Use Cases

- **2FA** - Any two-factor authentication, verification or one-time passcode
- **Account Notifications** - Standard notifications for account holders, relating to and being about a user's account
- **Customer Care** - All customer care interaction, including but not limited to account management and customer support
- **Delivery Notifications** - Notification about the status of the delivery of a product or service
- **Fraud Alert Messaging** - Notifications regarding potential fraudulent activity on a user's account
- **Higher Education** - Messaging created on behalf of Colleges or Universities, including School Districts and education institutions. This use case is NOT for the "free to the consumer" messaging model
- **Low Volume Mixed** - For Brands that have multiple use cases and only need very low messaging throughput. Examples include: test or demo accounts, small businesses (single Doctor's office, single Pizza shop etc)
- **Marketing** - Any communication that includes marketing and/or promotional content
- **Mixed** - Any messaging campaign containing 2 to 5 standard uses cases
- **Polling and voting** - The sending of surveys and polling/voting campaigns for non political arenas
- **Public Service Announcement** - Informational messaging to raise an audience's awareness about important issues
- **Security Alert** - A notification that the security of a system, either software or hardware, has been compromised in some way and there is an action you need to take.

Special Use Cases

- **Carrier Exemptions** - Exemption by Carrier
- **Charity** - Communications from a registered charity aimed at providing help and raising money for those in need. Includes: 5013C Charity.
- **Proxy** - Peer-to-peer app-based group messaging with proxy/pooled numbers. Supporting personalized services and non-exposure of personal numbers for enterprise or A2P communications.
- **Emergency** - Notification services designed to support public safety / health during natural disasters, armed conflicts, pandemics and other national or regional emergencies.
- **K-12 Education** - Campaigns created for messaging platforms that support schools from grades K - 12, and distance learning centers. This is not for Post-Secondary schools. This use case requires MNO approval.
- **Sweepstakes** - All sweepstakes messaging.
- **Political** - Part of organized effort to influence decision making of specific group. Available only to registered 501(c)(4) and 527 Orgs.
- **Social** - Communication between public figures/influencers and their communities. Examples include: YouTube Influencers' alerts or Celebrity alerts.
- **Platform Free Trial** - CSP "Free Trial" Offers for non paying customers, requires separate contract.
- **Agents; franchise; local branches** - Brands that have multiple agents, franchises or offices in the same brand vertical, but require individual localized numbers per agent/location/office.
- **Sole Proprietor** - Limited to entities without a EIN / Tax ID, requires separate contract.
- **UCaaS (Low Volume)** - UCaaS companies provide cloud delivered communication services for businesses. Each number assigned to a UCaaS campaign is typically assigned to a different employee of that business and the use cases are varied. This use case is not for any API/automated driven communication. This use case is only available to approved UCaaS businesses. This use case has the same volume restrictions as the Low Volume Mixed campaign type.
- **UCaaS (High Volume)** - UCaaS companies provide cloud delivered communication services for businesses. Each number assigned to a UCaaS campaign is typically assigned to a different employee of that business and the use cases are varied. This use case is not for any API/automated driven communication. This is for UCaaS campaigns that require higher volume. This use case is only available to approved UCaaS businesses.

Special Use Case: Charity - All 501(c)(3) Orgs

REQUIREMENTS

Brand has to be a registered Tax-Exempt Organization with a 501(c)(3) status

TXTPass supports registered Charities that want to take advantage of MNO specific terms for their messaging. The option to register a Brand as a Non Profit Organization is open for all Brands but only those organizations that hold a 501(c)(3) status will benefit from the special terms.

Brand Registration

The Brand should be registered as a “Non Profit” entity type. Only the “Charity” and “Emergency” Use Cases are available. Under the “Charity” Use Case, a minimum of 1 and maximum of 5 Use Cases should be declared.

Campaign Registration

- **How do I know if a Charity has been identified as a 501(c)(3)?**

All recognized 501(c)(3) Brands will have only the “Charity” and “Emergency” Use Cases available. The Tax Exempt status will be displayed on the Brand Details page after Brand Registration.

- **Can I choose only the “Charity” and “Emergency” Use Cases if my Brand is a 501(c)(3) Org?**

If a Brand is a recognized 501(c)(3) Org you should select “Charity” or “Emergency” as a Use Case to take advantage of beneficial MNO terms. You may subsequently select any Standard Use Case as a “Sub Use Case” to better identify the scope of the messaging.

Special Use Case: Political

REQUIREMENTS

Brand has to be a registered Tax-Exempt Organisation with a 501(c)(3/4/5/6) status or obtain a political vet through Campaign Verify or Aegis Mobile

Brand Registration

Available for "Non Profit" entity type only.

All 501 (c)(3/4/5/6) Orgs are automatically identified by TCR and have the following Use Cases immediately available:

- All Standard Use Cases
- Political Use Case

Orgs that are not automatically identified will have the option to import a Campaign Verify token or apply for Political Vetting through Aegis Mobile . All Orgs that import a CV token will have only the "Political" Use Case available.

Entity type: Platform Free Trials (PFT)

REQUIREMENTS

CSP must sign a contract addendum with TCR to create PFT campaigns - API Only

TXTPass supports CSPs that plan to offer “free trial” services to their new customers (e.g. new, small developers) to enable the testing of the CSP’s services. The option is available to CSPs and their customers, only for non-paying customers. The service will be enabled as follows:

Brand Registration

Campaign Registration

Not needed: TXTPass will provide a PFT enabled Brand 1 registered campaign per CSP under the “TRIAL” Use Case. ISV name as “reseller” attribute

- One sender 10DLC TN per PFT participant, with allocation managed by the CSP
- One 2FA verified recipient number per participant (CSP enforced, MNO audit rights)
- CSP to enforce 200 msg/day limit per TN to T-Mobile network.
- All messaging to be Watermarked (for ex. “Free Trial from CSP X” string at the end of messages)
- CSP to collect and notify TXTPass via API of specific data fields (as detailed in the addendum)
- CSP to generate a monthly report for each account (as detailed in the addendum)

Entity type: Sole Proprietors (SP)

REQUIREMENTS

Limited to entities without a EIN / Tax ID, requires separate contract

Sole Proprietors are paying customers of the CSP, with a billing address, but without an EIN / Tax ID. The service will be enabled as follows:

Brand Registration:

CSP will register a Brand, with less mandatory data fields, under the "Sole Proprietor" entity type.

Campaign registration:

Only the "Sole Proprietor" Use Case will be available during Campaign Registration. "Political" Use case available upon Political Vetting.

- One campaign allowed per Brand, with a maximum of 2 associated TNs
- If the campaign originates from an ISV, the ISV must be selected as the campaign 'Reseller'
- 1000 msg/day limit (T-Mobile) and 15msg/minute limit (AT&T)per Campaign - CSP to enforce daily limits and provide a monthly report to TCR
- TXTPass to collect the following data points for each SP during Brand Registration:
Name, email, billing address, contact phone number, vertical, CSP Unique Identifier / Reference ID
- CSP to generate a monthly report for each account (as detailed in the addendum)

Vetting and Approval Requirements

Use Case	Entity Type	External Vetting Required		Vetting Partner	Approval Required	
		AT&T	T-Mobile		AT&T	T-Mobile
Agents and Franchises		No	No		Post Campaign Registration	No
Carrier Exemptions		No	TBD		Post Campaign Registration	TBD
Charity	Non-Profit only	No	No		No	No
Proxy		No	No		Post Campaign Registration	No
Emergency		No	No		Post Campaign Registration	No
Political	Non-Profit or Sole Proprietor	Yes (except 501 c4 Orgs)	Yes (except 501 c4 Orgs)	Campaign Verify	No	No
Social		Yes	TBD	Aegis WMC Global	Post Campaign Registration	TBD
Sweepstakes		Yes	No	Aegis WMC Global	Post Campaign Registration	Post Campaign Registration
Platform Free Trial		No	No		No	No
UCaaS (High and Low volume)		No	No		Pre approved CSPs only	Pre approved CSPs only
Sole Proprietor	Sole Proprietor only	No	No		No	No

AT&T specifications

SPECIAL
Use Cases

Message Class AT&T	Use Case Type	Use Case	Vetting Score Requirements	AT&T TPM
A	Standard	Dedicated Use Case	75-100	4,500
B	Standard	Mixed / Marketing	75-100	4,500
C	Standard	Dedicated Use Case	50-74	2,400
D	Standard	Mixed / Marketing	50-74	2,400
E	Standard	Dedicated Use Case	1-49	240
F	Standard	Mixed / Marketing	1-49	240
T	Basic / Unregistered	Low Volume Mixed		75
G	Special	Proxy	25	60 per number
P	Special	Charity		2,400
S	Special	Social		60,000
K	Special	Political (Election Campaigns)		4,500
X	Special	Emergency Services		4,500
Z	Special	Platform Free Trial		6 per number
N	Special	Agents and Franchises	25	60 per number
W	Special	Sole Proprietor		15
Y	Special	Carrier exempt / K12 Education	25	720 per number
T	Special	UCaaS Low Volume		75
B / D / F	Special	UCaaS High Volume		240 / 2400 / 4500
C / A	Special	Sweepstakes	50-100	2400 / 4500

T-Mobile specifications

SPECIAL
Use Cases

Brand Tier T-Mobile	Use Case Type	Use Case	Vetting Score Requirements	T-Mobile Daily Cap
Top	Standard	All Use Cases	75-100	200,000
High Mid	Standard	All Use Cases	50-74	40,000
Low Mid	Standard	All Use Cases	25-49	10,000
Low	Standard	All Use Cases	1-24	2,000
	Special	Proxy		Standard
	Special	Charity		Standard
	Special	Social		Standard
	Special	Political		Special
	Special	Emergency Services		Standard
	Special	K-12 Education		Standard
	Special	Platform Free Trial		200
	Special	Agents and Franchises		Standard
	Special	UCaaS Low Volume		Low
	Special	UCaaS High Volume		Standard
	Special	Sole Proprietor		1000
	ALL	Government Entity type		Uncapped

GET IN TOUCH with TXTPASS

Phone:
954-462-9600

Services Email:
Support@ComResUSA.com
Sales Email:
Sales@ComResUSA.com

Address:
13798 NW 4th St.
Suite 315
Sunrise, FL 33325