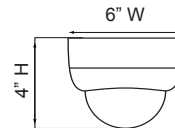




O2DP7 3.6 - 16mm auto iris varifocal lens

Features:

- Dual-codec (H.264 & MJPEG)
- Progressive scan megapixel (2.0M CMOS)
- Multi profile streaming (Up to 4 streams of different resolutions, frame rates and codec selections)
- Digital PTZ, video crop
- Analog video output (CVBS)
- Built-in standard PoE
- Two-way audio communication
- Built-in true day & night operation
- 3-axis lens mount
- Robust design & convenient installation
- SD Card storage for recording on the edge (SD Card not included)
- 2 year warranty



Camera Specifications

Image Sensor	Progressive scan 1/3.2 inch CMOS, 2.0M pixels
Full Resolution	1,600 x 1,200 pixels (UXGA)
Minimum Illumination (50IRE)	0.2 Lux / F1.2 (IR on - 0 Lux)
S/N Ratio	42db
White Balance	AWB (= 2500°C - 6500°C)
DSS	Supported
Day & Night	Supported (TDN, IR LED)
IR LEDs	18
IR Distance	49 ft.

Video Specifications

Compression Method	Simultaneous Dual Codec (H.264 / MJPEG) 15FPS @ 1600 x 1200 / 1280 x 1024 / 30FPS @ 1280 x 720 / 800 x 608 / 640 x 480 / 704 x 480 / 704 x 240 / 352 x 240 / 176 x 112
Resolution	
Multi-Profile Streaming	4 simultaneous video profiles
Intelligent Bit-Rate Control	CBR, VBR, HBR
PTZ	Digital PTZ & video crop
Image Setting	Text overlay, privacy mask, de-interlace filter
Motion Detection	3 regions

Audio Specifications

Mono Upstream	32Kbps G.726 ADPCM - LINE-in / MIC-in
Mono Downstream	128Kbps 16-bit Linear PCM - LINE-out (1Vpk)
Stereo	Stereo support

Network Specifications

Network Protocol	IPv4 / v6, TCP, UDP, IGMP, ICMP, ICMPv6, ARP, RARP, PPPoE, RTCP, RTP, RTSP, SDP, HTTP, HTTPS, SMTP, FTP, DHCP, UPnP, SNMP, NTP, DNS, DynDNS, SOCKS
Speco DDNS	Supported (free of charge)
Security	User ID & Password protection, IP address filtering, - HTTPS encryption, Digest Authentication, User Access Log

External Terminal Specifications

LAN	10 / 100 BaseT LAN
Analog Output	1 channel D1 CVBS output of the encoding video
Alarm Input / Output	1 Sensor input & 1 relay output
Other	Two Stereo Jack / RS-232 Debug / 12VDC in

System Integration Specifications

Standard PoE (IEEE802.3af)	Supported
Intelligent Video	Motion Detection
Alarm Triggers	Intelligent Video + Sensor Input
Alarm Events	Video file upload (FTP), still image (Email), relay output

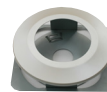
Client Software

Speco NVR	64 ch (free of charge)
-----------	------------------------

Operating Environment

Operating Temperature/	
Humidity	32° - 113°F / 8 - 80% RH
Power	12VDC (not included)
Power Consumption	1A
Dimensions	6" (W) x 4" (H)
Weight	1 lb.
Housing	PC / ABS, Ivory
Approvals	FCC, CE, MIC, RoHS
Package Information	IP camera, CD (user's guide, software), DC power adaptor, L wrench, ceiling mount, screws
iPhone/Android App	Speco OnSIP

Optional Mounting Accessory



O2DFM1
Dome Flush
Mount Kit



Speco Technologies is constantly developing and improving products.

We reserve the right to modify product design and specifications without notice and without incurring any obligation.

Rev. 1/6/12

For more information contact Speco Technologies

200 New Highway, Amityville, NY 11701 • Toll Free: 1-800-645-5516 • Fax: 631-957-9142 or 631-957-3880
www.specotech.com